

# Pressure Booster Stations

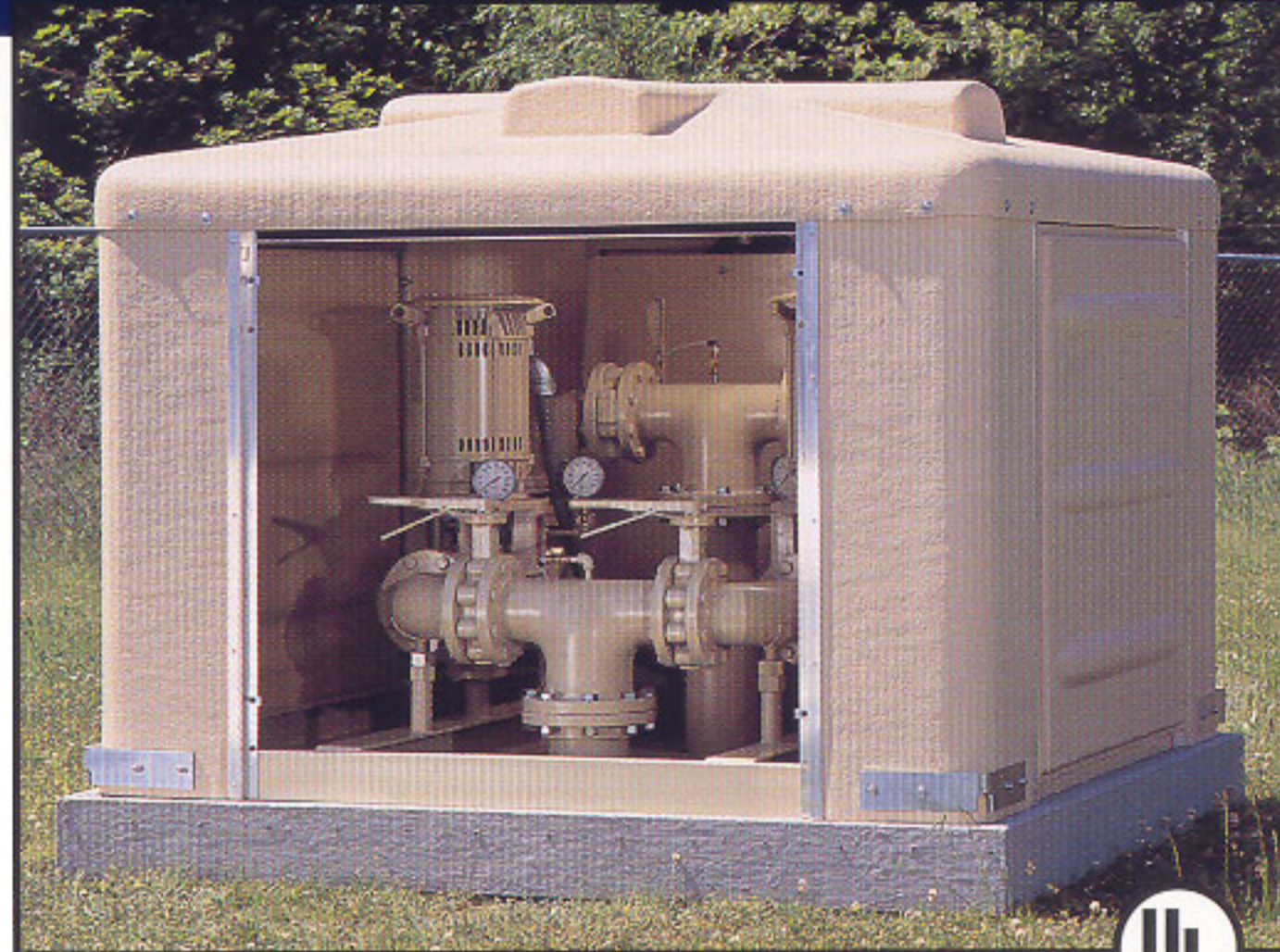


## 6' x 6' ABOVE GROUND STATION

The 6' x 6' Above Ground Pressure Booster Station is an economical, compact, pre-engineered unit shipped complete from the factory. Just add power and connect piping.

Outside, the neat, trim, low-silhouette fiberglass cover blends with the surroundings. The fiberglass enclosure resists corrosion and provides protection from weather. Hinged and removable panels provide easy access to pumps and controls for maintenance and service. It includes vandal-resistant design for added security.

The fiberglass enclosure accommodates two pumps and motors sized to meet your requirements. The pumps are available up to 6" discharge, delivering flows to 1000 GPM on single pump operation.

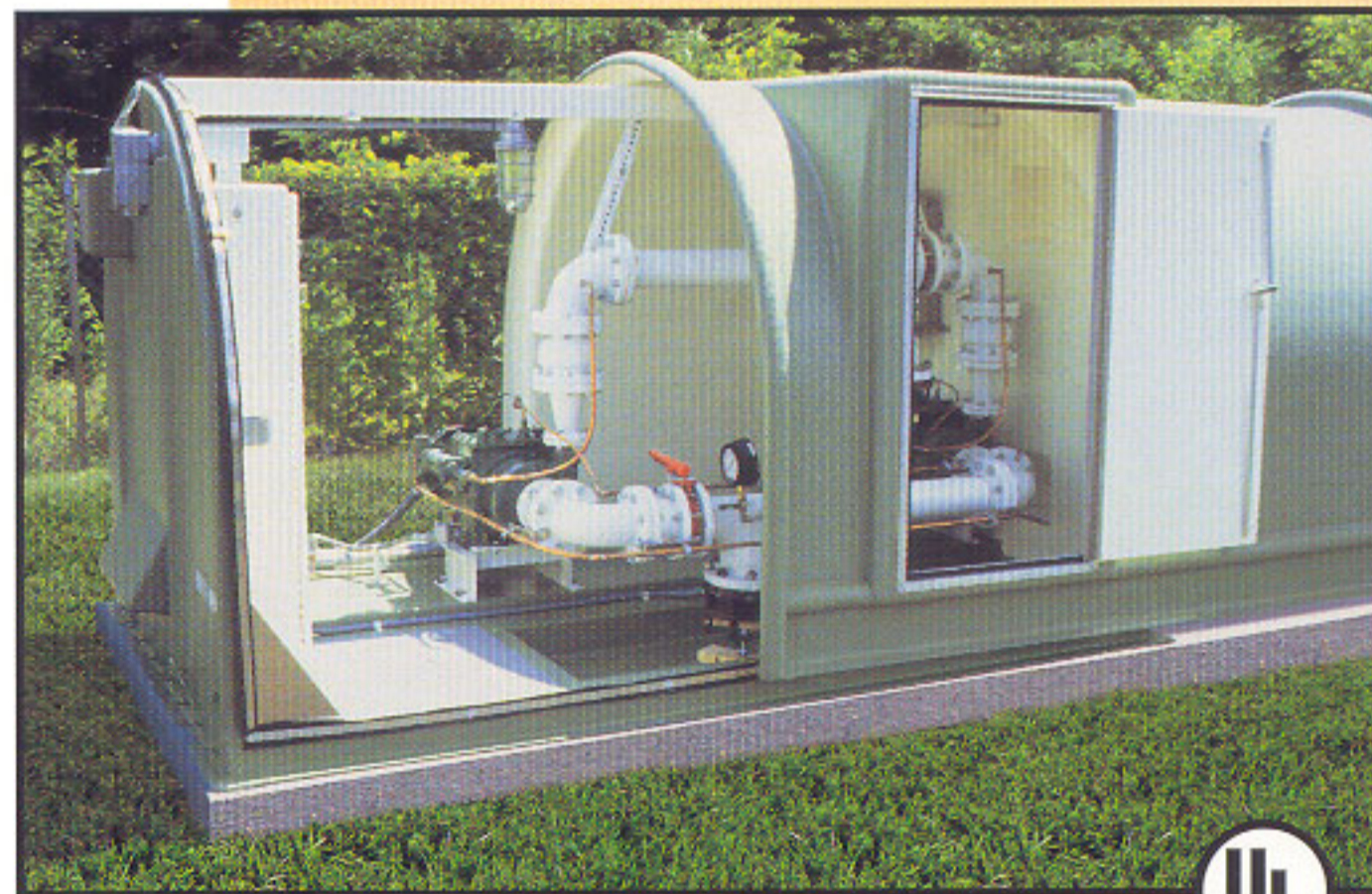


## 7' x 10' ABOVE GROUND STATION

Gorman-Rupp's 7' x 10' Above Ground Pressure Booster Station is a complete system, ready for immediate installation and hookup to power and piping.

The low-silhouette and color of the Quonset type fiberglass enclosure blend in with surrounding landscaping.

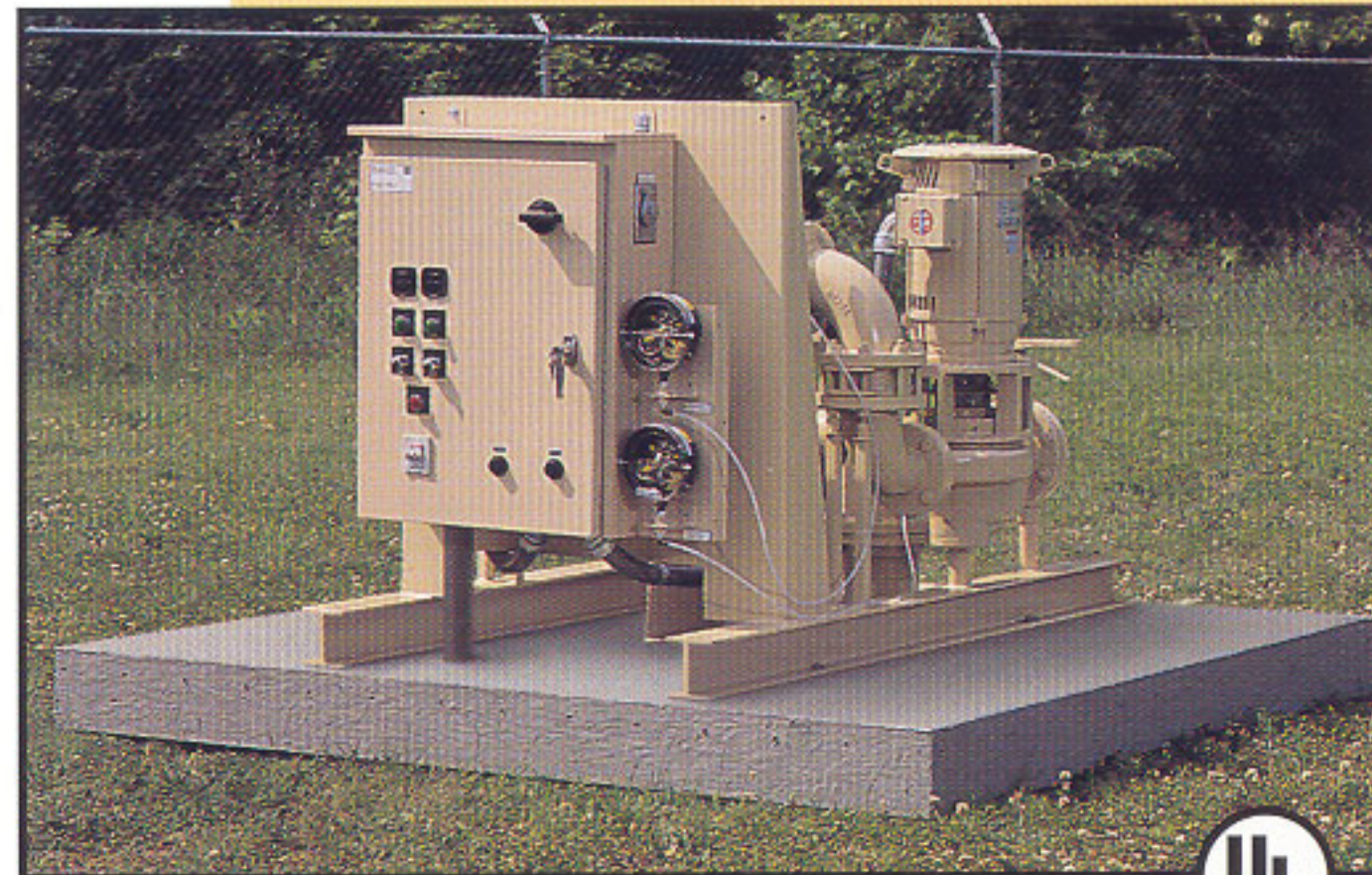
The fiberglass enclosure resists corrosion, mildew, fungus and mold. Two-way sliding cover provides easy access to all equipment for maintenance or service. Vandal-resistant door hardware and padlockable sliding cover are available for added security. The 7' x 10' stations include two vertical in-line or end suction pumps up to 6" discharge, capacities to 1000 GPM on single pump operation.



## BASE MOUNTED STATION

Base Mounted Pump Stations are pre-engineered units with an extensive selection of pumps, motors, controls, piping and accessories. Gorman-Rupp has many standard designs for new installations, or we can custom design for existing installations with minimum hookup time.

Base Mounted Pump Stations are available with a variety of pumps to match system requirements. Flows from low to heavy require that any number of pumps may be used in conjunction with multiple size pumps. Flows to 14000 GPM on single pump operation.



## MODULAR BOOSTER STATION

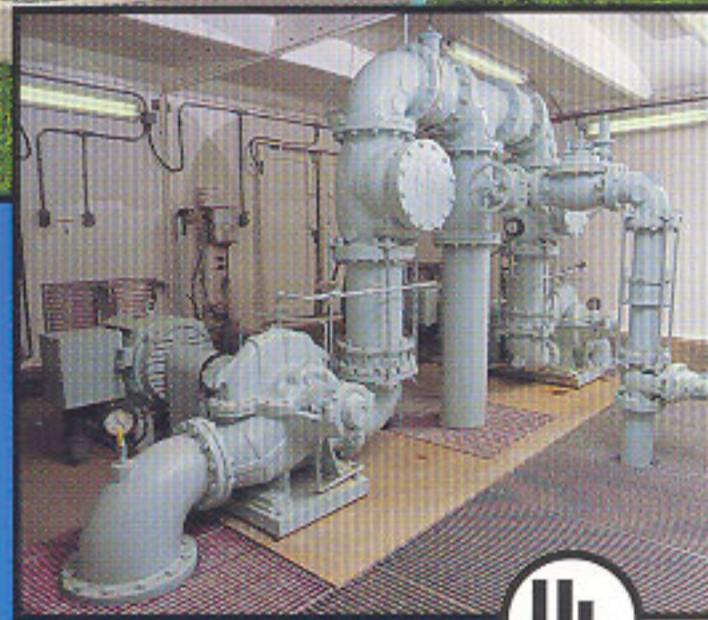
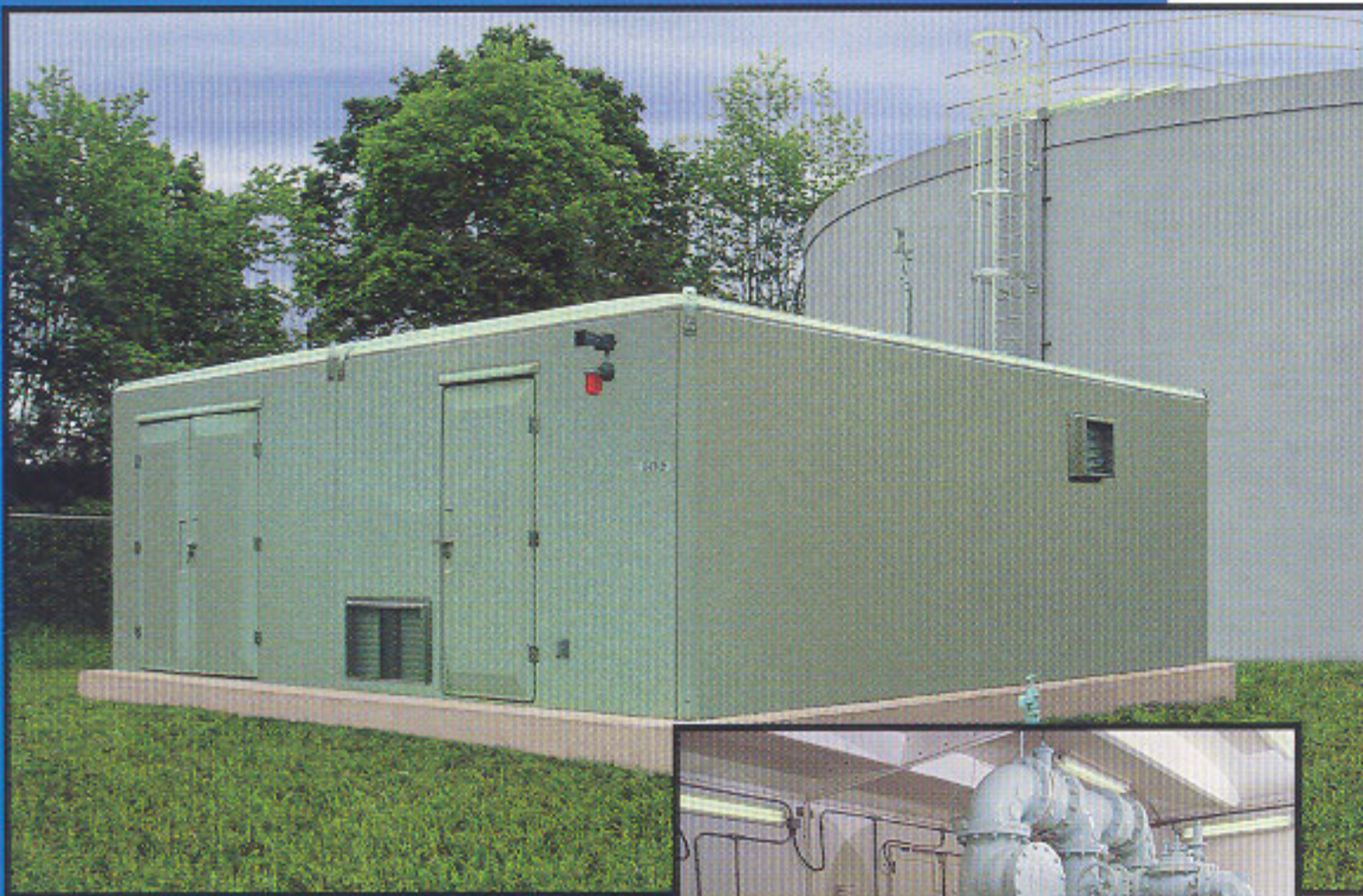
Our pre-engineered modular enclosures are convenient, affordable and durable. The modular enclosures can be expanded in increments of 2 feet. They range in size from 8' x 8' to 24' x 40'. Because they are pre-engineered, these units avoid the costs of designing and engineering a custom station housing.

These enclosures are made from corrosion and mildew resistant fiberglass which is impervious to caustic or acidic atmosphere and is UV resistant. White gel-coat interior adds easy maintenance and maximum light reflectance.

Strong and dependable, the enclosure will withstand winds up to 150 mph and it has a snowload rating of 40 lbs. per square foot. R factors are 20+ (R10 is standard).

Lighting, heating and ventilation are pre-wired and ready for immediate hookup at the site. Durable, 3-point stainless steel door lock is standard for added security.

Enclosures are available in green, gray, tan, and white. Custom colors and finishes are also available.



## BELOW GROUND BOOSTER STATIONS

The Low-Profile Booster Station is ideal for residential areas and costs less than standard below ground stations. The one foot high ground entrance contains an electromechanical jack that lifts the cover off for easy access with the turn of a key. Housed in a weather-proof fiberglass enclosure that resists corrosion, mildew and molds, the station holds up to two 6" pumps with capacities to 500 gpm, heads to 200' on single pump operation.

Gorman-Rupp's 7' 6" Diameter Below Ground Pump Station features an inconspicuous, low silhouette entrance tube and is widely used in residential areas. The fiberglass enclosure accommodates an extensive selection of pumps, motors and accessories to meet your pumping needs. Pumps are available up to 6" sizes with flows up to 1300 gpm on single pump operation.

Gorman-Rupp also offers a 10' Diameter Below Ground Pump Station with identical features. This station accommodates up to 4 pumps (depending on size) with flows up to 1300 gpm on single pump operation.

Units are delivered right to the job site, ready to install and operate once simple piping and power connections are made.

