

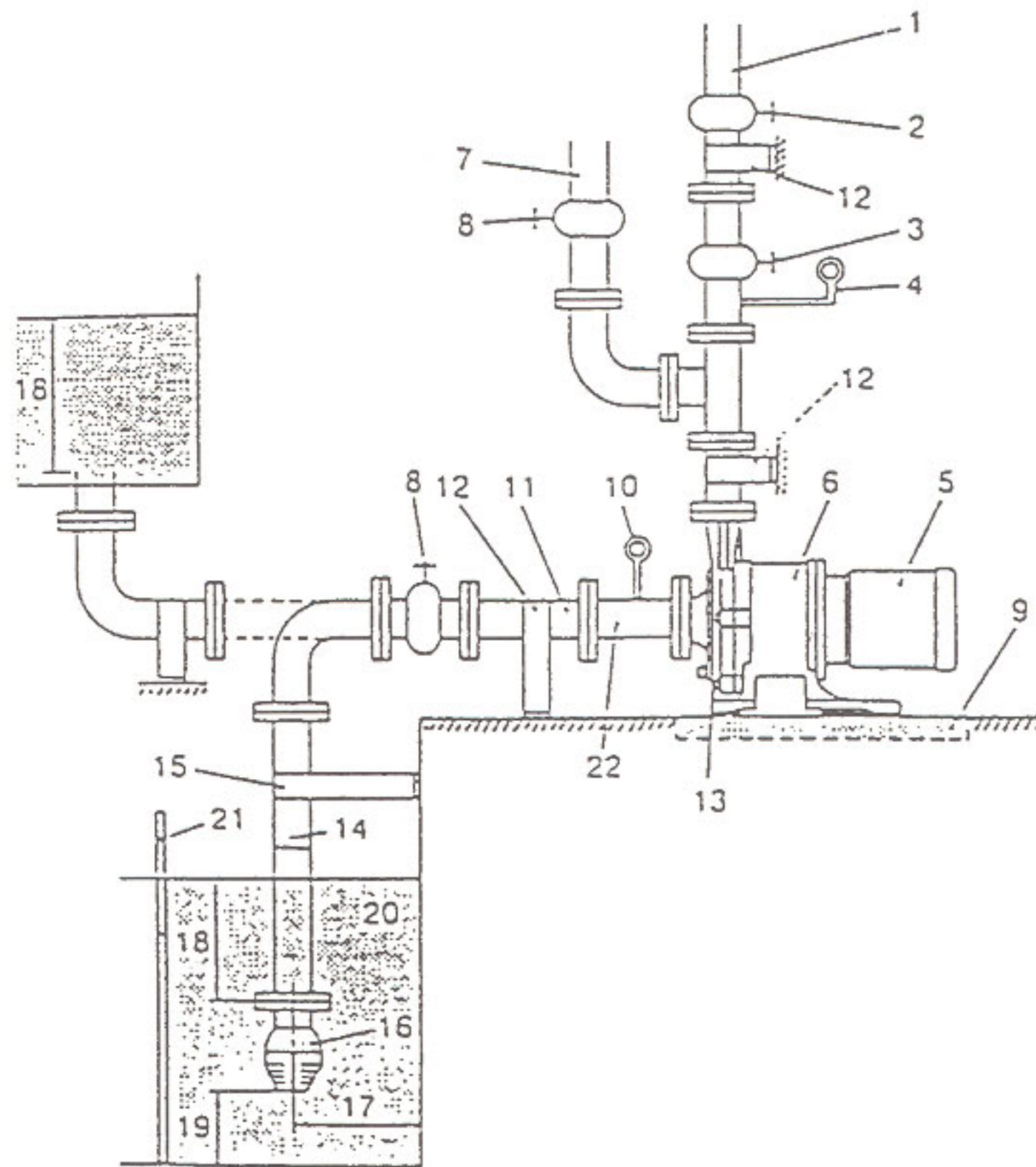
INSTALLATION AND PIPING ARRANGEMENT

INSTALLATION POSITION

- > Install the pump as close to the suction tank as possible (flooded suction).
- > If the suction port of the pump is positioned higher than the suction tank (suction lift), be sure to arrange a foot valve in the suction pipe. Self priming pumps are designed to operate without needing a foot valve.
- > The pump can be installed for use indoors or outdoors. However, there should be sufficient space around the pump to enable efficient and easy maintenance.

INSTALLATION

- > Set the pump set on a concrete foundation and fasten the anchor bolts tightly to prevent the pump from vibrating during operation.
- > Insert a spacer between the concrete surface and the bottom of the base to level the pump horizontally. Next, put a level on the discharge flange surface to adjust the pump horizontally in the direction of the pump shaft. Also adjust the direction vertical to the pump horizontally in the direction of the pump shaft. Also adjust the direction vertical to the pump shaft at the same time by placing a level on the suction flange surface. Pour cement mortar into the foundation bolt holes after leveling has been completed. When the cement mortar is hardened, fasten the anchor bolt nuts firmly. (see Fig. 1).
- > In case there is influence of motor vibration during operation (e.g. sympathetic vibration with piping), an expansion joint should be provided between the pump and the piping before the installation. Otherwise, pipes and gauges may be damaged.



- | | |
|---|--|
| <ol style="list-style-type: none"> 1. Discharge pipe (Use a support to keep the pump free from the load of the pipe). 2. Discharge valve. 3. Check valve. 4. Pressure gauge. 5. Motor. 6. Pump. 7. Priming pipe. 8. Gate valve. 9. Drain ditch. 10. Compound gauge. 11. Suction pipe (Diameter=D) (shortest horizontal section with an ascending gradient toward the pump). 12. Pipe support. 13. Pump drain. 14. Suction pipe (D: diameter of pipe). | <ol style="list-style-type: none"> 15. Suction pipe stabilizer brace (Used if the suction pipe is particularly long). 16. Foot valve. 17. 1.5D or more. 18. 2D, or 24 inches or more. 19. 1~1.5D or more (if sediment accumulates easily). 20. Suction tank. 21. Screen. 22. Short pipe. |
|---|--|

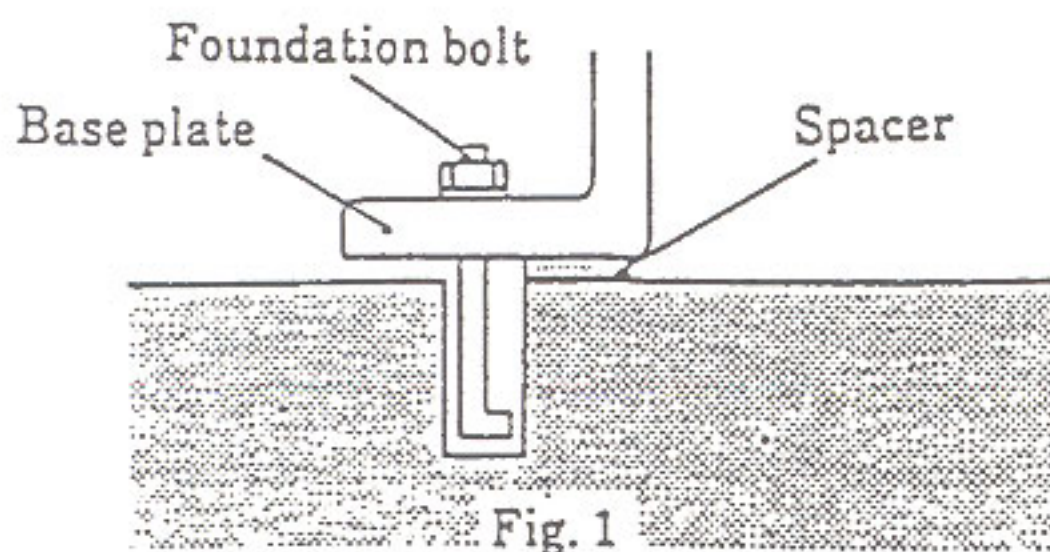


FIG. 1

PIPING