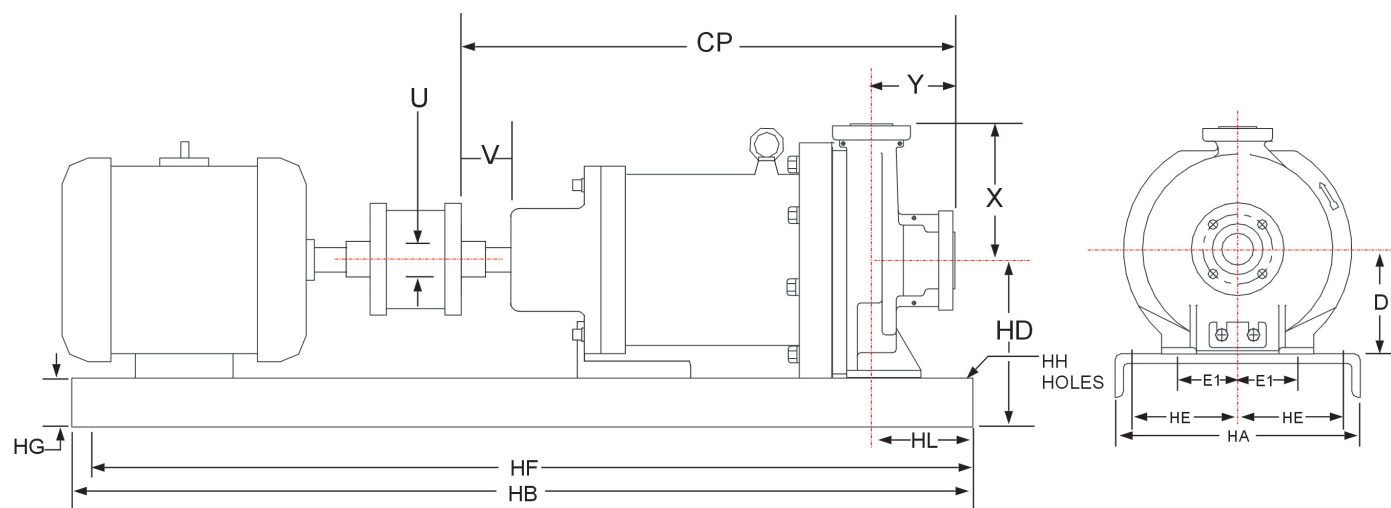


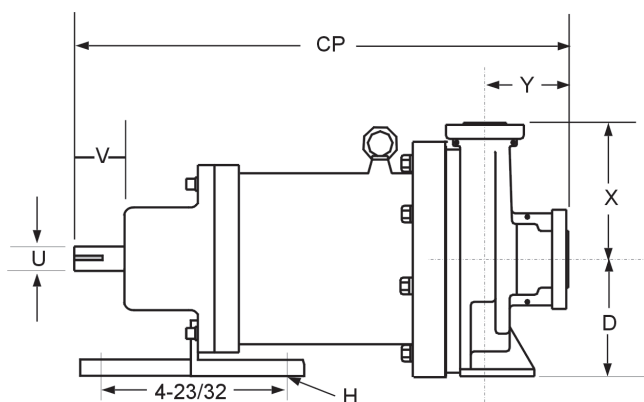
MDE

**Frame Mounted Motor Type
Pump and Baseplate Dimensions**



Pump Dimensions in inches (mm)

| Model | Size | X | D | E1 | CP | F | H | U | V | Y |
|---------|------------|-----------------|-----------------|----------------|------------------|-----------------|----------------|-----------------|----------------|-----------------|
| MDE-AA6 | 1½ x 1 x 6 | 6.50 (165.1) | 5.25 (133.4) | 3.00 (76.0) | 17.50 (444.5) | 7.25 (184.2) | 0.63 (15.9) | 0.875 (22.2) | 2.06 (52.4) | 4.00 (101.6) |
| MDE-AB6 | 3 x 1½ x 6 | | | | | | | | | |
| MDE-AA8 | 1½ x 1 x 8 | | | | | | | | | |



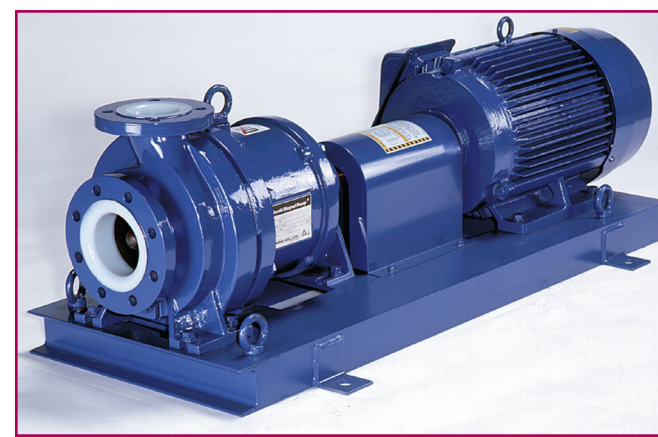
Baseplate Mounting Dimensions in inches (mm)

| Baseplate | Max. Motor Frame | HA | HB | HD | HE | HF | HG | HH | HL | HP | Weight lbs (kg) |
|-----------|------------------|------------------|-------------------|------------------|-----------------|-------------------|----------------|----------------|-----------------|----------------|-----------------|
| 139 | 184T | 15.00 (381.0) | 39.00 (990.6) | 9.00 (228.6) | 4.50 (114.3) | 36.50 (927.1) | 3.75 (95.3) | 0.75 (19.1) | 4.50 (114.3) | 1.25 (31.8) | 135 (61.2) |
| 148 | 215T | | 48.00 (1219.2) | 10.00 (254.0) | 6.00 (152.4) | 45.50 (1155.7) | | | | | 167 (75.7) |
| 148 | 256T | | 48.00 (1219.2) | 10.00 (254.0) | 6.00 (152.4) | 45.50 (1155.7) | | | | | 167 (75.7) |

Part number 180216.A Jan 2003



**MDE
MAGNETIC DRIVE PUMPS**



MDE is the largest in the Iwaki Walchem chemical process pump line. This series delivers fluid purity protection, corrosion resistance, durability and safety. MDE combines state-of-the-art pump technology with ANSI B73.1 dimensions to make replacement of sealed pumps fast and easy.

- MDE is offered in either ETFE for **cost-effective handling of aggressive fluids** or PFA for the **highest level of purity** available in semiconductor or electronics grade applications.
- MDE's non-metallic **containment shell** cover eliminates eddy currents and prevents any sparks from occurring in the event of drive magnet contact. This high-strength cover also reinforces the containment shell, providing a second level of pressure containment.
- Iwaki Walchem materials deliver higher levels of **durability and safety** - all fluororesin casing parts are housed in coated ductile cast iron for additional ruggedness.
- **Simple disassembly and maintenance** - back pull-out construction allows MDE internal parts to be checked or replaced without disturbing piping. Components such as bearings and thrust collars can easily be replaced individually.
- The MDE not only meets, but **exceeds the need for smart, sealless pumps**. Proven monitoring options, available at an affordable price, help protect not only your pump, but also your process from unexpected interruptions.



