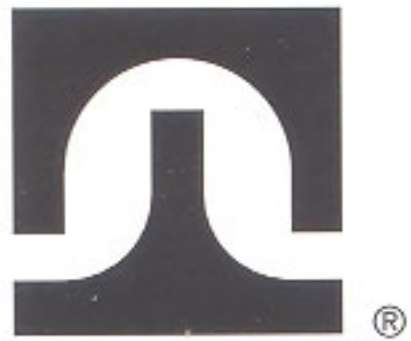
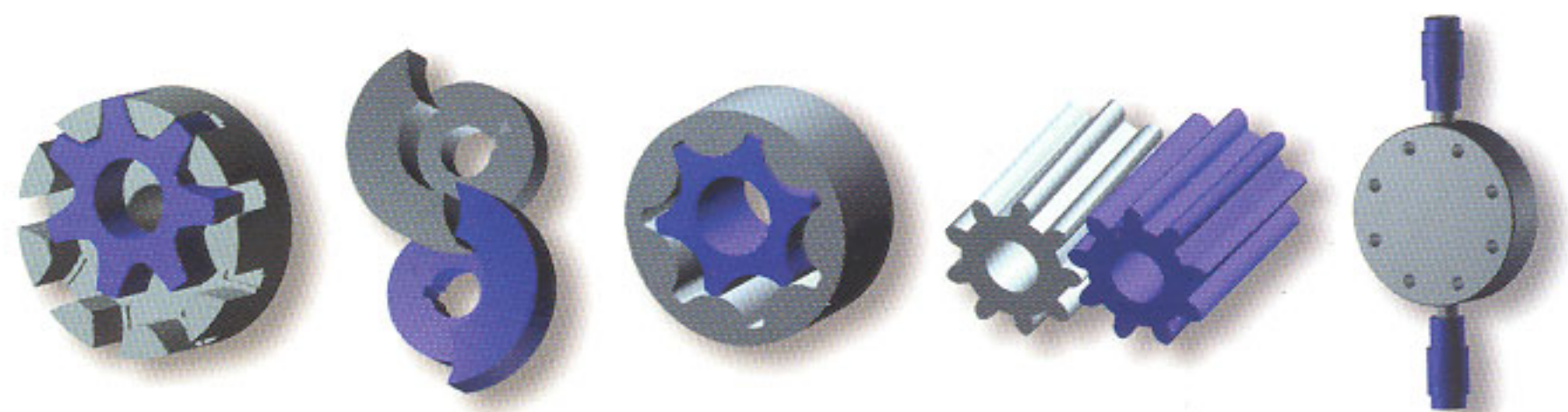




TUTHILL PUMP GROUP
ENGINEERED | solutions.

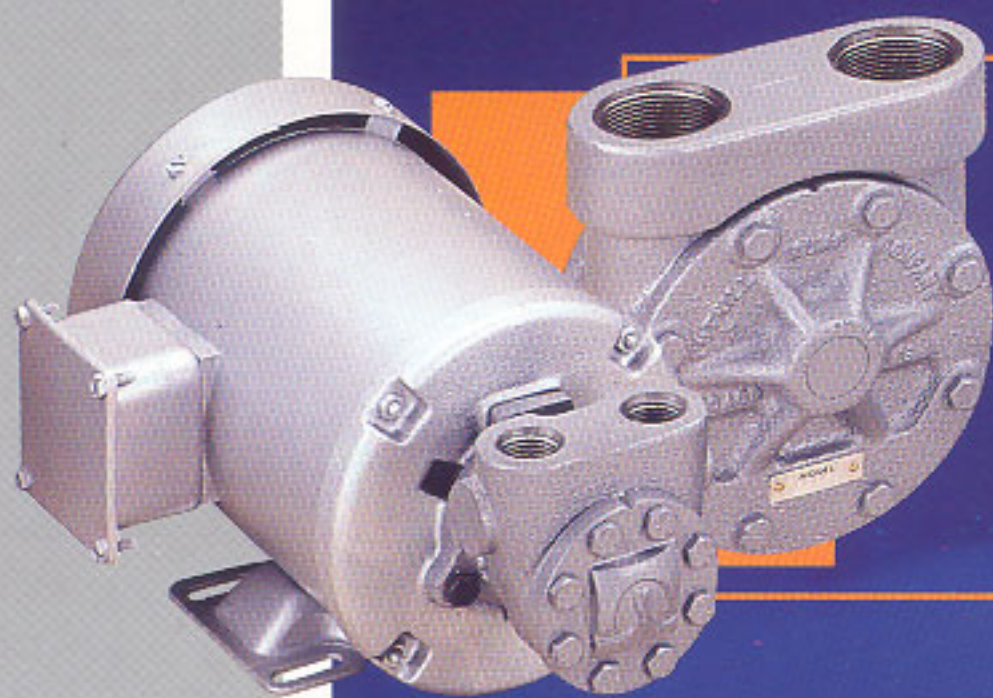


**O E M AND
PROCESS
APPLICATIONS**



TUTHILL: where technology, innovation and commitment to service meet to provide engineered solutions. Cellular manufacturing, backed by sound design, produces top quality products in a cost-efficient manner—and enables prompt delivery. Tuthill engineering and sales people are dedicated to providing customer satisfaction.

ENGINEERED | solutions.



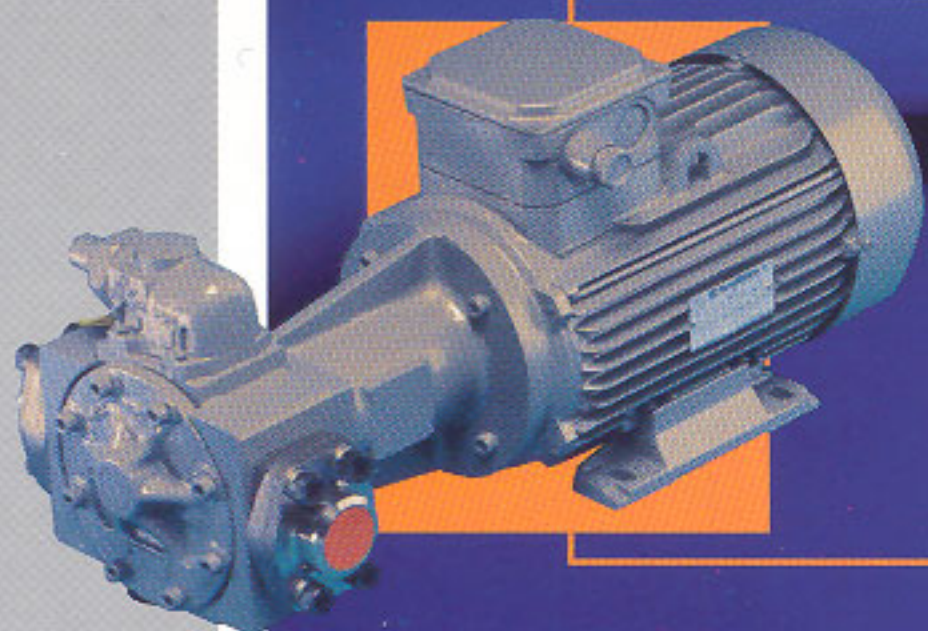
L AND C SERIES

- ▶ Internal-gear pump design.
- ▶ Flowrates from 0.5 usgpm (1.9 lpm) to 84 usgpm (318 lpm).
- ▶ Pressures to 500 psi (34.5 bar).
- ▶ Cast iron construction.

APPLICATIONS:

Lubrication, fuel oils, transfer, circulation, low-pressure hydraulics and others.

OEM APPLICATION



1000 SERIES

- ▶ Internal-gear pump design.
- ▶ Flowrates from 2.5 usgpm (9.5 lpm) to 130 usgpm (492 lpm).
- ▶ Pressures to 300 psi (20.6 bar).
- ▶ Cast iron construction.
- ▶ Side ported housings, with multiple port styles available.

APPLICATIONS:

Lubrication, fuel oils, transfer and others.

OEM APPLICATION



D, P, U AND M SERIES

- ▶ External-gear, magnetically-coupled pump design ensures zero leakage.
- ▶ Flowrates from less than 2 oz/hr (1 ml/min) to 1.4 usgpm (5.3 lpm).
- ▶ Pressures to 250 psi (17.2 bar).
- ▶ Stainless steel engineered composite (PPS), Hastelloy and Titanium versions available.

APPLICATIONS:

Laser cooling, metering, laboratory, dosing, automotive, lubrication and others.

OEM APPLICATION



TR SERIES

- ▶ Gerotor-gear pump design.
- ▶ Compact lubrication pump mounted directly on equipment shafts.
- ▶ Flowrates from 0.1 usgpm (0.4 lpm) to 13.5 usgpm (51 lpm).
- ▶ Pressures to 100 psi (6.9 bar).
- ▶ Multiple porting options, including discharge through the drive shaft.

APPLICATIONS:

Pressure lubrication for compressors, gearboxes, transmissions and other equipment.

OEM APPLICATION



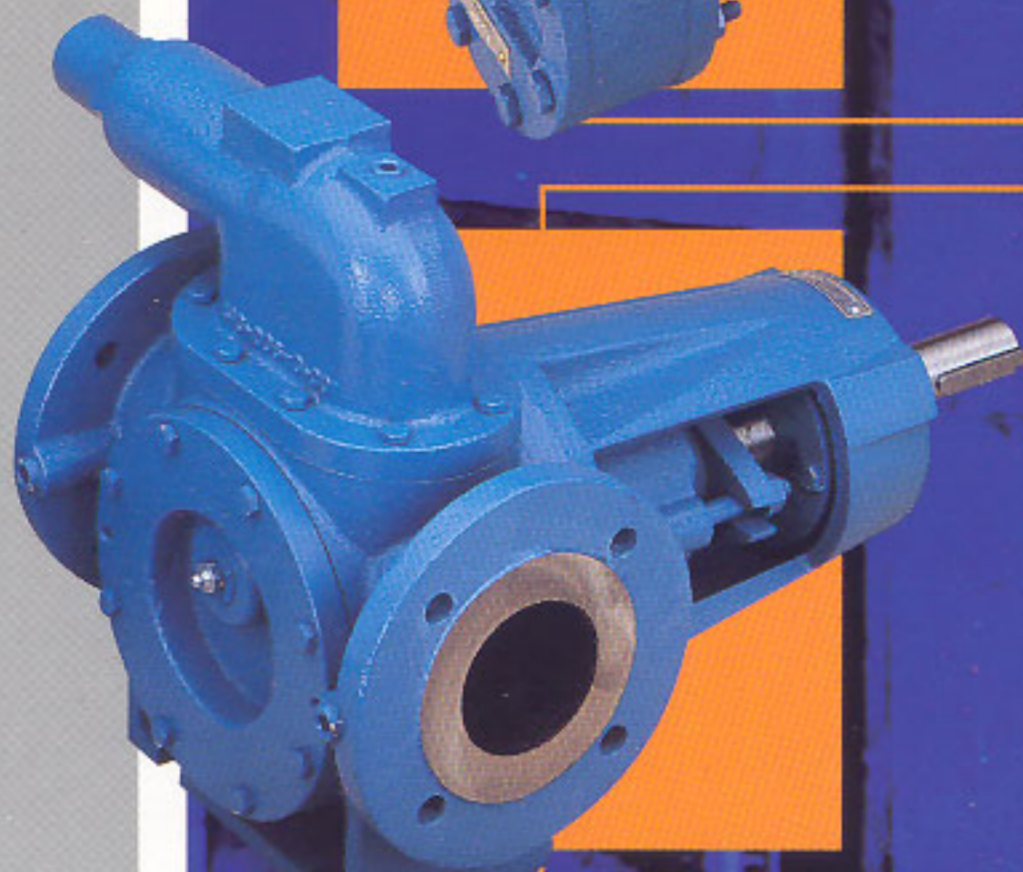
4000 SERIES

- ▶ Internal-gear pump design.
- ▶ Flowrates from 0.5 usgpm (1.9 lpm) to 84 usgpm (318 lpm).
- ▶ Pressures to 300 psi (20.7 bar).
- ▶ Cast iron construction. Optional abrasion-resistant materials available.

APPLICATIONS:

Fuel oils, coolants, inks, paints, abrasive fluids and others.

PROCESS APPLICATION



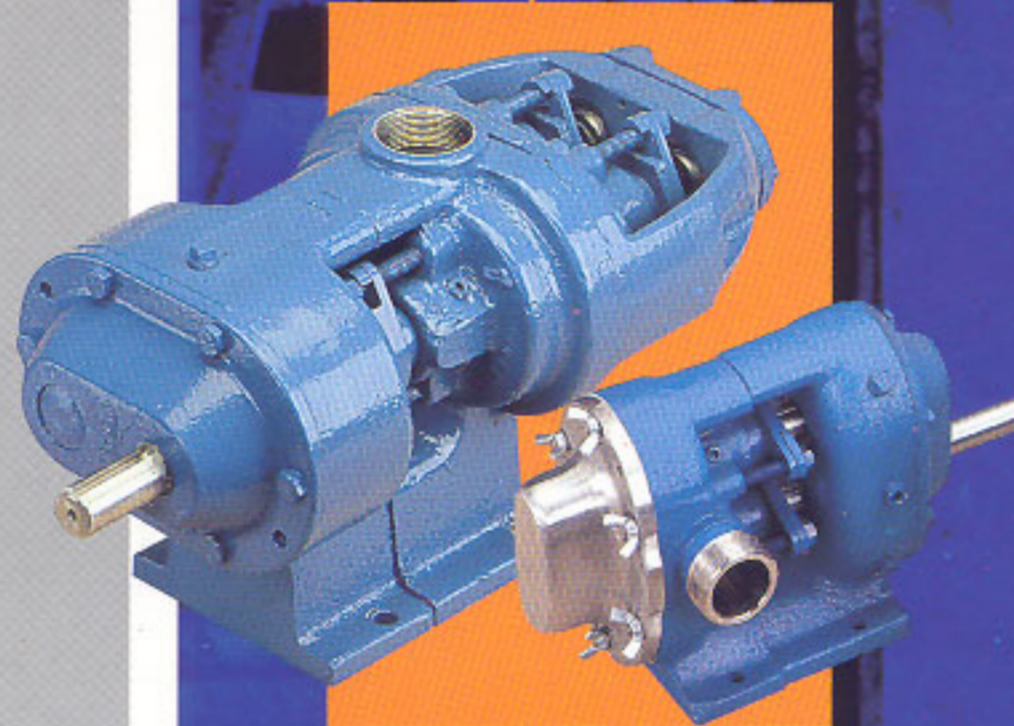
ST SERIES

- ▶ Internal-gear pump design.
- ▶ Flowrates to 550 usgpm (2082 lpm).
- ▶ Pressures to 200 psi (13.8 bar).
- ▶ Temperatures to 650° F (343°C).
- ▶ Cast iron, carbon steel and stainless steel versions available.
- ▶ Modular design with many optional features.

APPLICATIONS:

Chemical processing, bulk transfer, petroleum products, foods, asphalt, high temperature fluids and others.

PROCESS APPLICATION



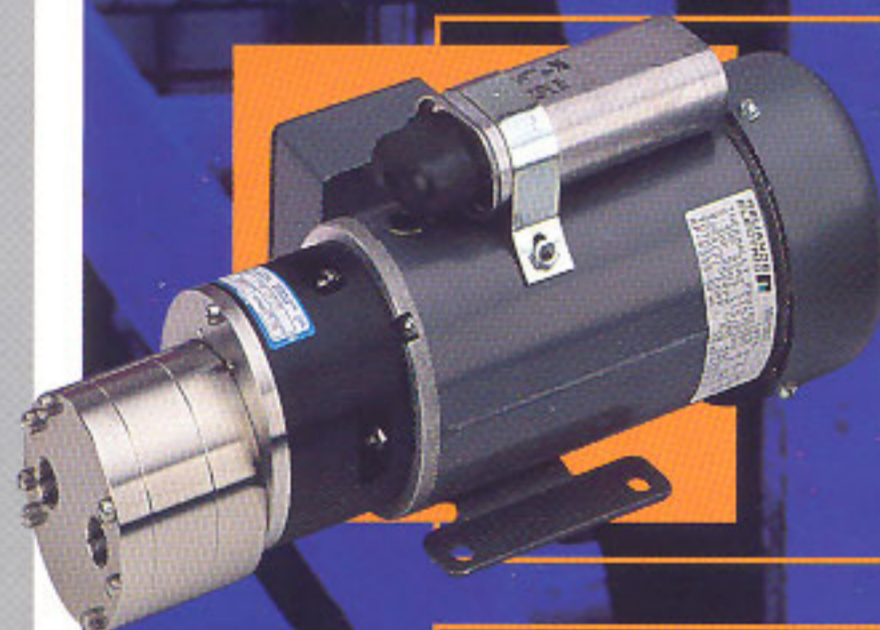
HD SERIES

- ▶ Positive-displacement, circumferential-piston pump design offers exceptionally low shear.
- ▶ Flowrates to 650 usgpm (2460 lpm).
- ▶ Pressures to 450 psi (31 bar).
- ▶ Viscosities to 20,000,000 ssu (4,400,000 cst).
- ▶ Capable of running dry indefinitely.
- ▶ Ductile iron and stainless steel versions available.

APPLICATIONS:

Severe applications including pulp and paper, meat processing, sludge, slurries, foods and asphalt.

PROCESS APPLICATION



T SERIES

- ▶ External-gear, magnetically coupled pump design ensures zero leakage.
- ▶ Flowrates up to 7.2 usgpm (27 lpm).
- ▶ Pressures to 200 psi (13.8 bar).
- ▶ Stainless steel and Hastelloy construction available.

APPLICATIONS:

Temperature control units, oil filtration, chemical metering, cooling and others.

PROCESS APPLICATION



6000/7000/8000 SERIES

- ▶ Internal-gear magnetically-coupled pump design ensures zero leakage.
- ▶ Flowrates to 130 usgpm (492 lpm).
- ▶ Pressures to 500 psi (34.5 bar).
- ▶ Cast iron, carbon steel and stainless steel versions available.

APPLICATIONS:

Hazardous fluids, isocyanates, foods and fluids difficult to mechanically seal.

PROCESS APPLICATION



ACCUTROL SERIES

- ▶ Diaphragm metering pump design.
- ▶ Flowrates to 2800 usgph (177 lpm).
- ▶ Pressures to 500 psi (34.5 bar).
- ▶ Stainless steel, Alloy 20 and PVC versions available.
- ▶ Mechanical or hydraulic actuation available.
- ▶ Up to 25:1 turndown ratio and $\pm 0.5\%$ accuracy.

APPLICATIONS:

Municipal and industrial waste/wastewater treatment, additive metering, chemical manufacturing, pharmaceuticals and others.

PROCESS APPLICATION



● TUTHILL SALES OFFICES
○ TUTHILL MANUFACTURING LOCATIONS

ENGINEERED | solutions.



TUTHILL
Pump Group



Fluid Handling Solutions™
SPRAYING PUMPING FILTERING
All from one

VANCOUVER: (604) 942-7622

CALGARY: (403) 219-0939

EDMONTON: (780) 468-4499

WINNIPEG: (204) 786-5529

SASKATOON: (306) 668-4636

MISSISSAUGA: (905) 624-4200

SUDBURY: (705) 692-4734

MONTREAL: (514) 636-6400

DARTMOUTH: (902) 832-3935

Tel 44.115.932.5226 Fax 44.115.932.4816

email: tuthilluk@tuthill.com

5143 Port Chicago Highway
Concord, California 94520

Tel 925 676-8000 Fax 925 676-8151

email: tutcal@tuthill.com

www.tuthill.com